

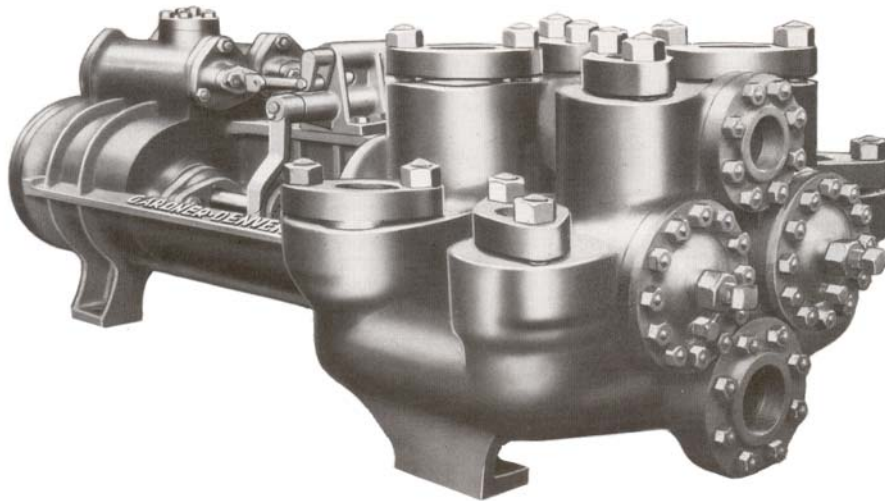


DFS (FD-FS) HIGH PRESSURE DUPLEX STEAM PUMP Air • Steam • Gas Driven

SPECIFICATIONS:

No. of Pistons: 2
Stroke Length: 10"
Pump Weight: 2,650 lbs.
(1,202 kg)

**Fluid Cylinder
Connections**
Suction: 4"
Discharge: 3"



VALVE POT TYPE DUPLEX STEAM PUMPS

With Piston Type Steam Valves – One-Piece Alloy Cast Iron Fluid End

DFS (FD-FS) SIZES AND RATINGS

| *SIZE | | Diameter of Steam Cylinders | | Diameter of Fluid Cylinders | | Length of Stroke | | Steam End Suitable for Max Pressure | | Max Steam Pressure for Max Fluid Pressure | | Fluid End Suitable for Maximum Pressure | | Max Fluid Pressure with Max Steam Pressure | | *DISPLACEMENT | | | | | |
|-------|-----|-----------------------------|-----|-----------------------------|-----|------------------|--------|-------------------------------------|--------|---|--------|---|--------|--|-----------------|---------------|-----------------|---------------|-----------------|--|--|
| | | | | | | | | | | | | | | | | 30 RPM | | 60 RPM | | | |
| in | mm | in | mm | in | mm | lbs/in2 | kg/cm2 | lbs/in2 | kg/cm2 | lbs/in2 | kg/cm2 | lbs/in2 | kg/cm2 | Gal. per Rev. | Liters per Rev. | Gal. per Min. | Liters per Min. | Gal. per Min. | Liters per Min. | | |
| 10 | 254 | 5 | 127 | 10 | 254 | 400 | 28.1 | 400 | 28.1 | Test Pressure 3000 psi | 211.0 | 1120 | 78.7 | 3.247 | 12.29 | 97.4 | 369 | 195 | 738 | | |
| | | 4.5 | 114 | | | | | 400 | 28.1 | | | 1380 | 97.0 | 2.601 | 9.84 | 78.0 | 295 | 156 | 591 | | |
| | | 4 | 102 | | | | | 345 | 24.3 | | | 1500 | 105.5 | 2.023 | 7.66 | 60.7 | 230 | 121 | 458 | | |
| | | 3.5 | 89 | | | | | 265 | 18.6 | | | 1500 | 105.5 | 1.513 | 5.73 | 45.4 | 172 | 90.8 | 344 | | |
| | | 3 | 76 | | | | | 195 | 13.7 | | | 1500 | 105.5 | 1.071 | 4.05 | 32.1 | 122 | 64.3 | 243 | | |
| | | 2.5** | 64 | | | 134 | 9.4 | | | 1500 | 105.5 | .697 | 2.64 | 20.9 | 79 | 41.8 | 158 | | | | |

Cylinder liners and pistons interchangeable in sizes listed in each group.

* Theoretical displacement with rods deducted (no slippage considered).

Stalling pressures are approximately 50% in excess of maximum fluid pressures.

** Available for standard fitted, oil fitted, or brass fitted only (not mud, slush or grout fitted).

Specifications subject to change without notice.



DFS (FD-FS) High Pressure Duplex Steam Pump Air • Steam • Gas Driven

STANDARD EQUIPMENT

- Rods and pistons.
- Liners and valves.
- Wood skids.
- All necessary drain cocks and plugs.

OPTIONAL EQUIPMENT

- Lubricator
- Fluid liner pullers
- Valve seat pullers
- Surge chamber
- Steel skid
- Stainless steel valves

MODEL DESIGNATIONS

| MODEL | FD-FS |
|---------------------------|---------------------|
| Mud Service Fitted * | DFSB |
| Grout & Cement Service * | DFSE |
| Oil Service | DFSH |
| General Service | DFSS |
| Bronze Fitted (Water Svc) | DFSL |
| Stroke | 10" |
| Liner Size | |
| Maximum | 5" |
| Minimum | 2.5" |
| Fluid End Type | Cast Iron One Piece |
| *Minimum liner size 3" | |

MATERIAL SPECIFICATIONS

| COMPONENT | STANDARD FITTED | MUD, GROUT & CEMENT FITTED | OIL SERVICE FITTED | BOILER FEED or WATER SERVICE |
|---------------------------|------------------------|----------------------------|------------------------|------------------------------|
| Cylinder | Cast Iron | Cast Iron | Cast Iron | Cast Iron |
| Liners | Hardened Steel | Hardened Steel | Hardened Steel | Bronze |
| Suction Manifold | Integral with Cylinder | Integral with Cylinder | Integral with Cylinder | Integral with Cylinder |
| Discharge Manifold | Integral with Cylinder | Integral with Cylinder | Integral with Cylinder | Integral with Cylinder |
| Packing | Braided Polymer | Molded Convex | Braided Polymer | Braided Polymer |
| Piston | Iron Follower Type | Steel Insert Type | Iron Solid Type | Bronze Follower Type |
| Piston Rod | Hardened Steel | Hardened Steel | Hardened Steel | Bronze |
| Stuffing Box | Cast Iron | Cast Iron | Cast Iron | Cast Iron |
| Valve | Steel Wing Guided | Steel (Gravel) Wing Guided | Steel Wing Guided | Bronze Wing Guided |
| Valve Seats | Iron | Steel | Steel | Bronze |

| STEAM END | |
|-------------|-----------------|
| COMPONENT | MATERIAL |
| Cylinder | Cast Iron |
| Piston | Cast Iron |
| Packing | Braided Polymer |
| CONNECTIONS | |
| Inlet | 2" |
| Exhaust | 2 ½" |
| | |
| | |
| | |
| | |

*Materials listed are furnished as standard equipment. Alternate materials available upon request.



For additional information contact your local representative or
 Gardner Denver Pump Division,
 1800 Gardner Expressway, Quincy, Illinois 62301
 Customer Service Department
 Telephone: (800) 682-9868 FAX: (217) 224-7814
 Sales and Service in all major cities.